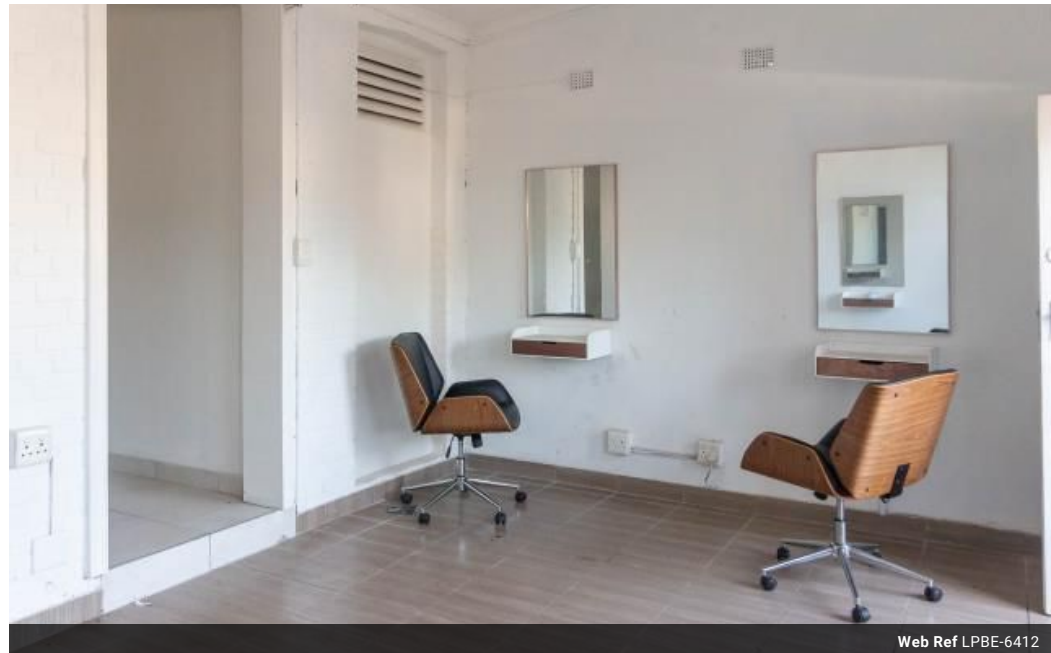




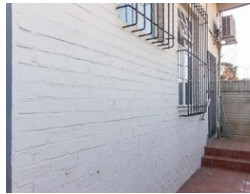
Rafeek Adam
073 623 8141
rafeek.adam@leapfrog.co.za

Contact Pretoria East
012 348 1940

Corrobay corner
Dallas road
Unit 5a
Menlyn
Pretoria



Web Ref LPBE-6412



POA

 4.5  5

Ideal development site

Investment Opportunity

To meet up for demand for office block and for other service providers vis Health care ,Hair dressing unit this is an Ideal location

Ideal Office space in popular location IDEAL FOR ATTORNEYS ,FINANCIALS MARKETING SMALL BUSINESSES
Property at the corner of Cowey (Problem Mkhize) and Argyle Road Essenwood

Renovated with new light fittings to give the modern Touch

Includes large balcony facing away from sun set and rain and a garden

3 Large rooms with high ceiling and Air-conditioning in selected rooms also including a balcony for you to refresh

Close to Windemere Center and Avondale Spar. Also quick access to city center and Freeways

Viewing by appointment

Phone Rafeek Adam to arrange viewing

Features

Pets Allowed Yes

Interior
Bedrooms 4.5
Bathrooms 5
Recep. Rooms 2
Furnished No

Exterior
Carports / Parkings 4
Security No
Dom. Accom. 1
Pool No
Views Yes

Sizes
Land Size 1,061m²